



Pimpama, QLD

33 Belconnen Drive

4
BED

2⁺
BATH

4
CAR

GC real estate

SPACIOUS ULTRA-MODERN RESIDENCE

Three year old, quality built "Smart" home located in Gainsborough Greens on a large 675m² block offering spacious living and top of the range fixtures and fittings throughout.

As you enter this magnificent single level home, you will appreciate the contemporary design and what it has to offer... Inspection highly recommended!

Many features including:

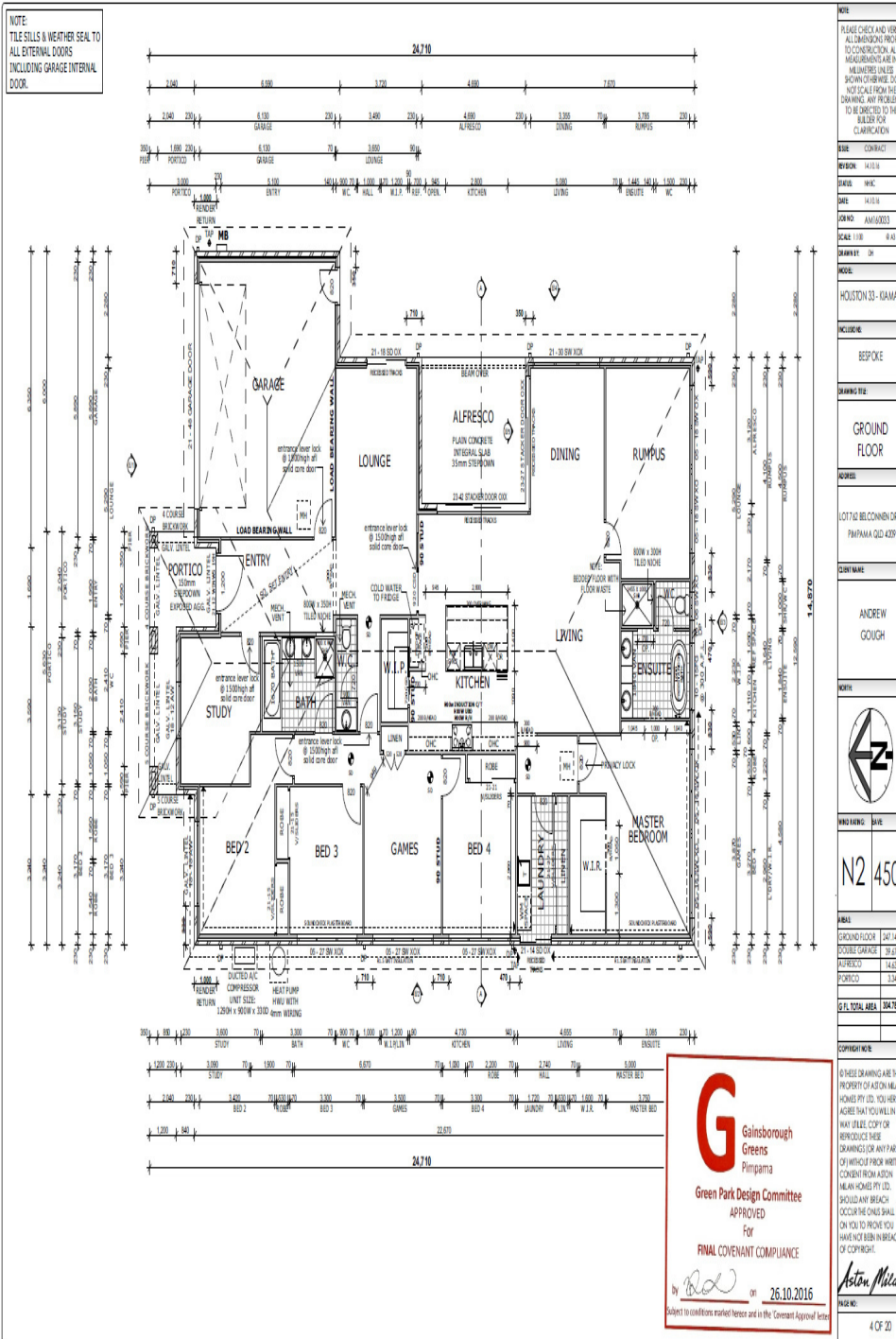
- * Four generous size bedrooms with built in robes
- * Home office with built in wall monitor and cube units
- * Two luxurious fully tiled bathrooms PLUS a powder room

SOLD

Contact: Mario Morais
0416 007 994

Type: House
Sold Date: 07/10/2020
Land: 675m²
Year Built: 2017

<http://www.gcrealestate.com.au>



Plans shown are only indicative of layout. Dimensions are approximate.

Pimpama, QLD 33 Belconnen Drive